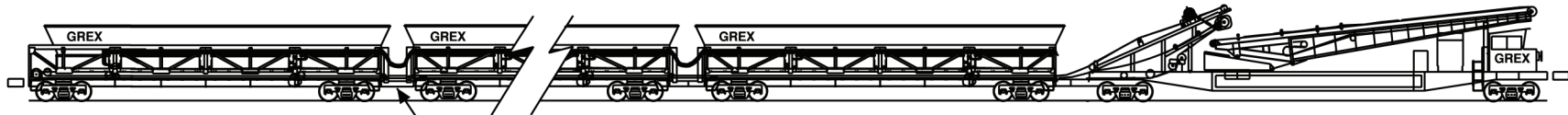


TRAIN NO.	NET TON CAP	LENGTH	TRAIN NO.	NET TON CAP	LENGTH
2100	1,500	750'	2700	1,500	960'
2200	1,600	1,023'	2800	1,500	750'
2300*	1,500	1,003'	2900	1,500	750'
2400	1,500	750'	4000	1,050	844'
2500	1,500	964'	8000**	950	728'
2600	1,500	960'			

*2300 has 35' boom ** 8000 has 38' boom

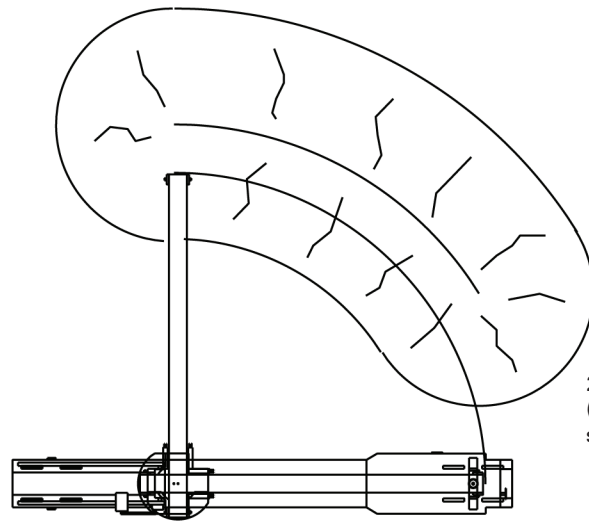
DumpTrain™ Aggregate Delivery System



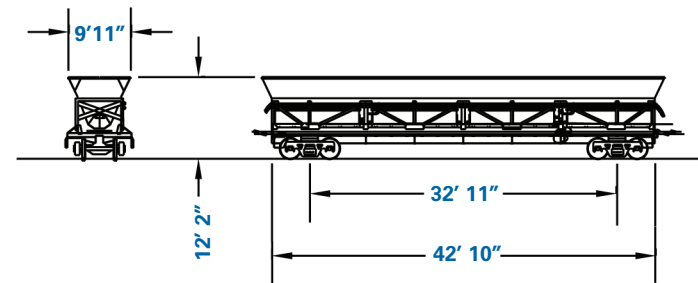
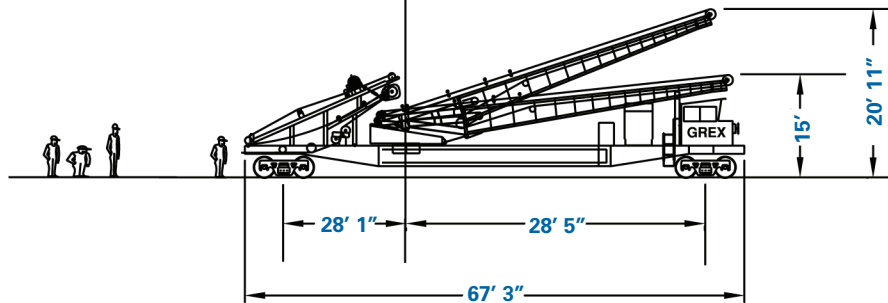
Note: permanently coupled with ASF slackless drawbar, negotiable curves - recommended 18 degrees max

Transfer Car

- Light weight: 186,000 lbs
- Continuous discharge rating 2,020 tph (rock)
- Max lump size = 3"
- Power: Diesel electric
- Running clearance: plate C
- Trucks and brakes: 100 ton
- Track speed: no restrictions
- Requires locomotive from user to move it

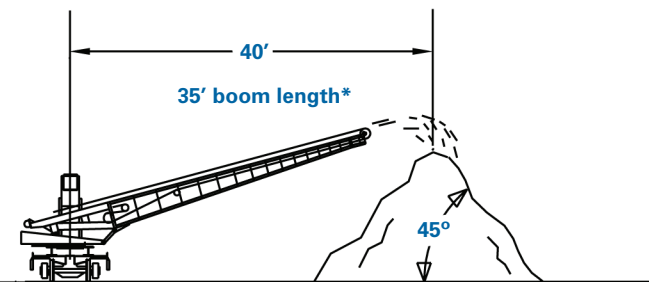


26,318 ft³ stockpile
(52,737 ft³ using both sides of track)



Hopper Car

- Light weight: 63,000 lbs
- Cubic capacity: 2,000 ft³
- Nominal load: 200,000 lbs



A better way to work.