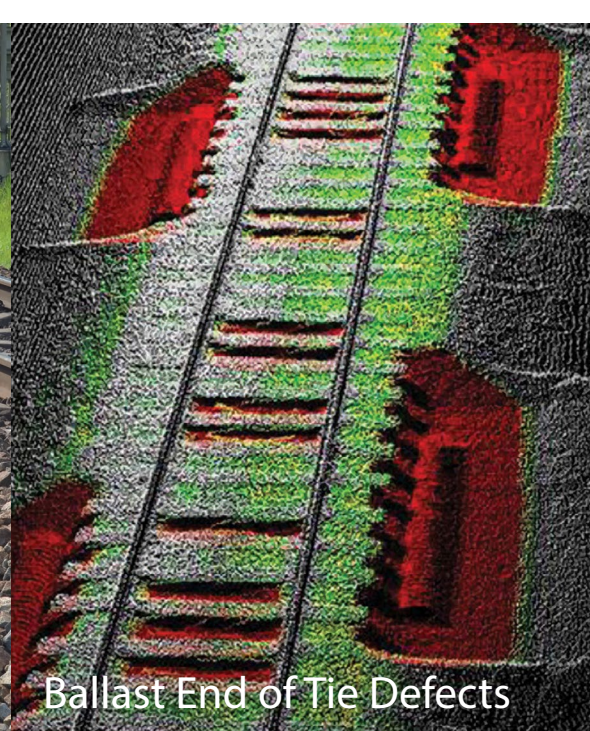


BallastSaver®



Automated Ballast
Assessment



Take the guesswork out of determining your ballast needs.

BallastSaver® allows you to deliver only the ballast you need right where it's needed. The system uses cutting edge technology to analyze your existing ballast profile. It then compares it to an idealized profile to identify any and all ballast deficiencies. With that knowledge in hand, you can plan out your ballast spends and pinpoint your deliveries.

By pinpointing your ballast needs with BallastSaver, you can remove subjectivity from the process. Easily determine the number of ballast cars you need over a given area, or prioritize the unloading of a car that's already on site to dump ballast only at the most critical areas.

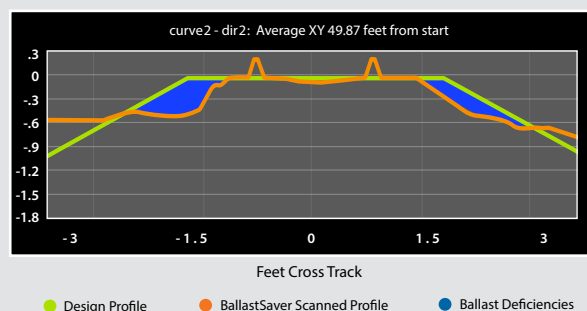
Using BallastSaver to plan out your annual ballast program makes sense for your budget. Not only can you minimize the amount of ballast you need to purchase at any given time, you can also accurately estimate your future needs and plan your purchases accordingly.

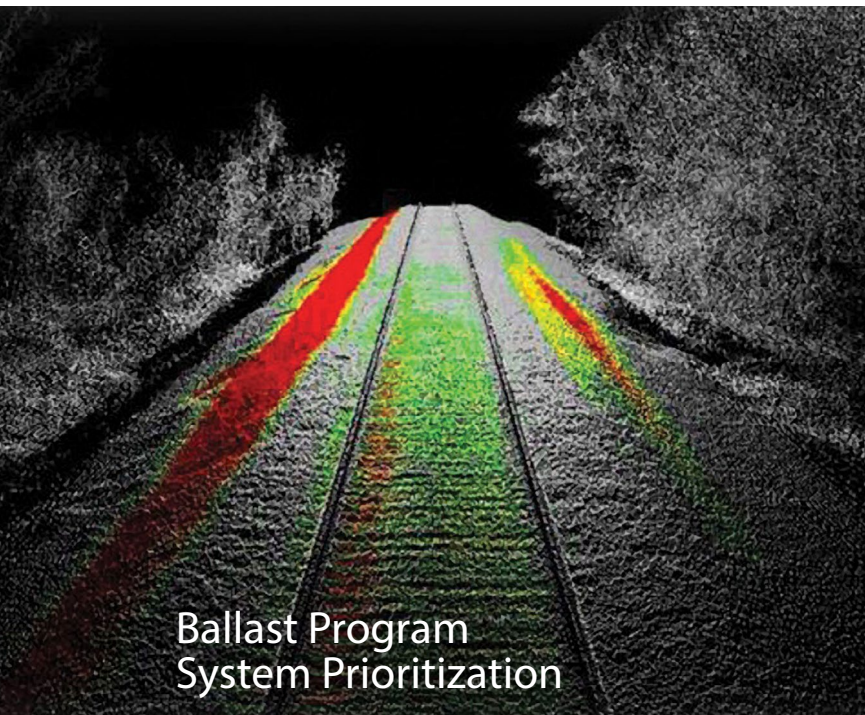
BallastSaver's completed scans are designed to be input into our GateSync system to automate the ballast delivery process. Automated delivery minimizes the amount of manpower you need to get the job done and avoids tying up your track longer than absolutely necessary.

Missing ballast at the end of ties is a particularly problematic situation that can cause lateral stability issues. BallastSaver allows you to quickly identify and remedy the condition.

- Uses a 20 foot rolling average to identify critical areas
- Flags location with coordinates for easy identification
- Accurate, repeatable results

BallastSaver Calculates and Reports the Amount of Ballast Deficiency





Ballast Program System Prioritization

Using performance-based weighting factors, BallastSaver can calculate and prioritize your ballast needs throughout your rail system.

- Prioritize ballast placement based on performance requirements
- Create 10 to 20 mile section-based ballast programs
- Meets industry inspection requirements



Localized Ballast Surveying

BallastSaver surveys calculate ballast deficiencies in the cribs, shoulders and side slopes of the ballast section. It even takes into account increased shoulder requirements in curves.

- Improves accuracy and efficiency of ballast placement
- Optimizes the amount of ballast needed
- Works with GateSync for automated ballast delivery

Integrate with GateSync and Aurora to streamline maintenance

The data generated from BallastSaver's advanced LiDAR based laser scans can be analyzed through a dedicated viewer or fed directly into our GateSync software for automated ballast delivery. GateSync works by operating the remote-controlled gates on your ballast cars, dropping ballast with pinpoint precision at up to 10 miles per hour.

BallastSaver can be integrated onto the same hi-rail vehicle as our Aurora track inspection system to provide a comprehensive view of the condition of your track in a single pass — from deficiencies in the ballast profile to flaws in individual ties. With the complete picture in front of you, you can plan out your capital maintenance programs with unprecedented accuracy and confidence.

BallastSaver®

BallastSaver®

www.LoramTechnologies.com

